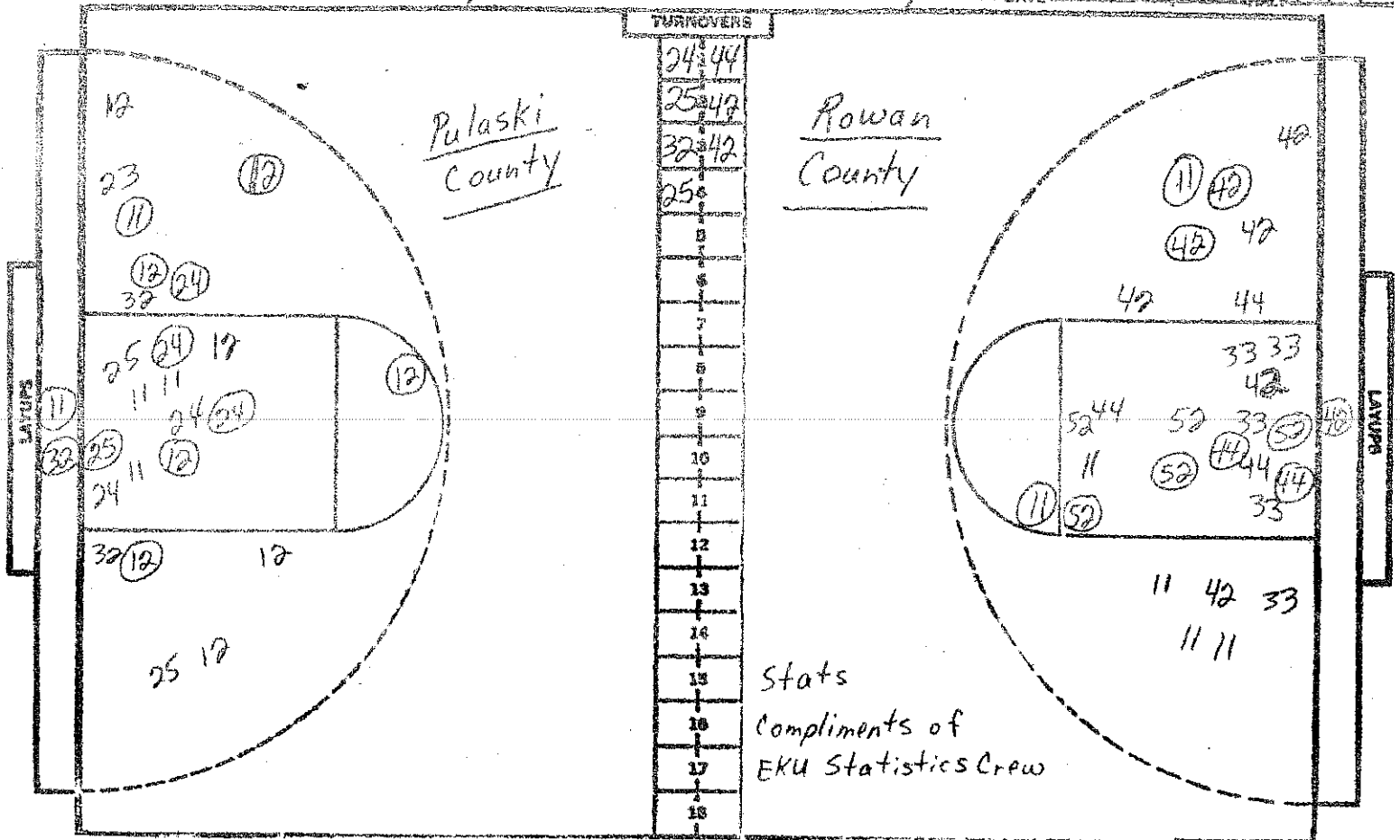


CASE CHART

Rowan County

Palaski County

DATE: March 23, 1981 FIRST



Stats
Compliments of
Eku Statistics Crew

NO.	Player	FG-FGA	FT-FTA	REB	P	TP	A
G 12	Lori Hines	5-9	2-2	2	1	12	0
G 11	Brenda Hurst	2-5	0-1	6	0	4	0
F 32	Debbie Dixon	1-3	2-2	1	0	4	2
F 25	Pam Phipps	1-2	0-0	6	0	2	0
C 24	Sheila Sutton	3-6	0-0	2	2	6	1
31	Lori Maney	-	-				
23	Peggy Herring	0-1	0-0	0	0	0	0
30	Kelley Hoiers	-	-				
15	Kim Garner	-	-				
33	Staci Acton	-	-				
14	Polly Wilson	-	-				
20	Brenda Sutton	-	-				
		-	-				
		-	-	0	DB		
TOTALS		12-26	4-5	17	3	28	3

NO.	Player	FG-FGA	FT-FTA	REB	P	TP	A
G 42	Karla May	3-8	0-0	1	1	6	4
G 11	Jeanne Cornett	2-6	0-0	3	2	4	0
C 44	Jelana Haney	2-5	0-0	4	0	4	0
F 52	Debbie Dellart	3-5	0-0	7	1	6	0
F 33	MaryBeth Hamm	0-5	0-0	2	0	0	0
53	Lori Powers	0-0	0-0	0	0	0	0
34	Pam Anderson	-	-				
24	Vivian Flora	F-	-				
43	Vonda Ramey	-	-				
35	Caryn Anderson	-	-				
23	Cindy Lawson	-	-				
32	Susan Barker	-	-				
		-	-				
		-	-	0	DB		
TOTALS		10-29	0-0	17	4	20	4

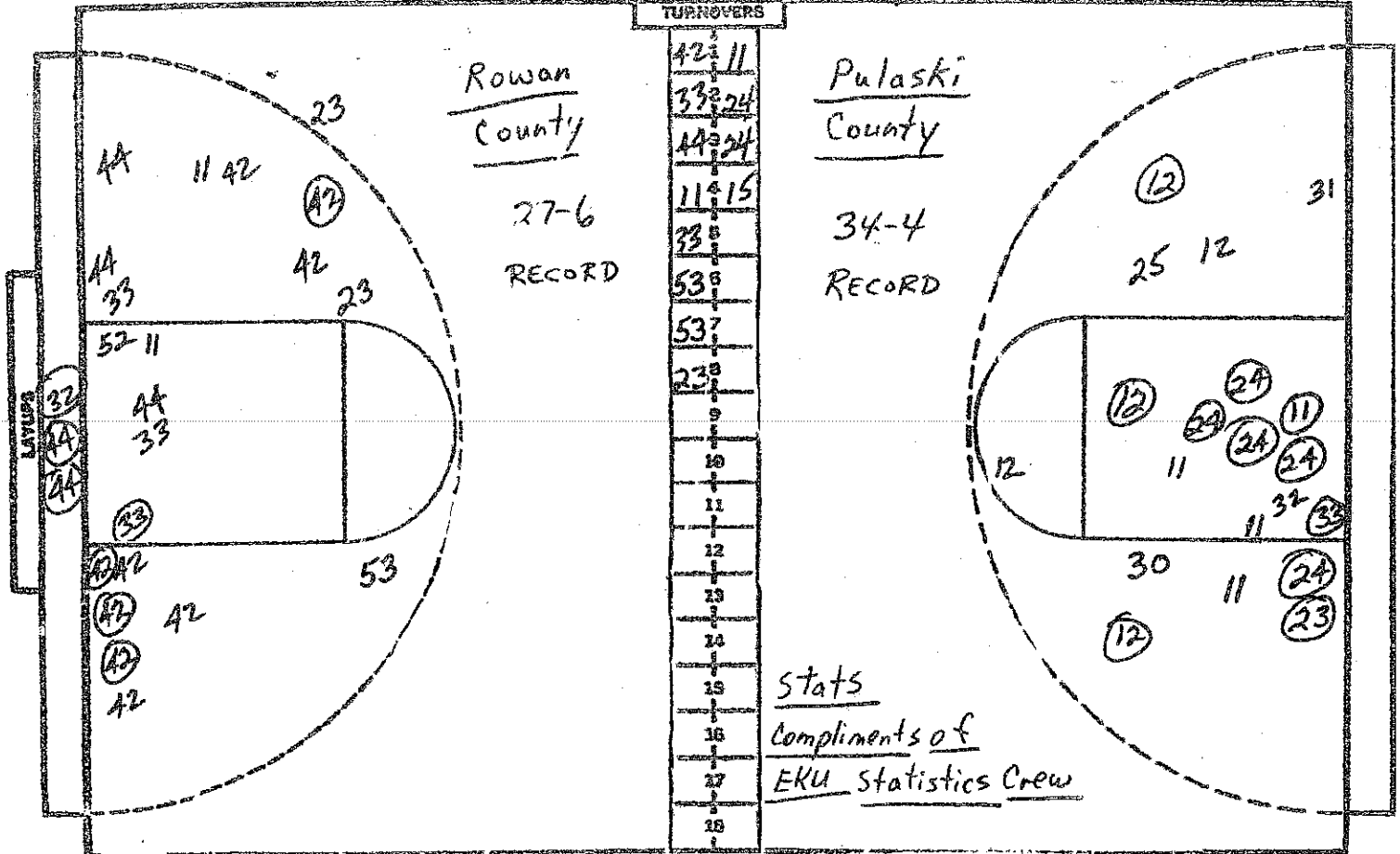
PERCENTS 46.2 80.0 0 TEAM REBOUNDS (NOT IN TOTAL)

PERCENTS 34.5 0.0 0 TEAM REBOUNDS (NOT IN TOTAL)

Palaski County
14-14=28

Rowan County
12-8=20

SCORE BY HALVES
OFFICIALS: Dottie Brothers & L. V. McFinty



NO.	Rowan Co.	FG-FGA	FT-FTA	REB	P	TP	A
G 42	Karla May	7-17	0-0	3	2	14	7
G 11	Joanne Cornett	2-8	0-0	3	3	4	0
C 44	Jelana Hamey	4-11	0-1	7	0	8	0
F 52	Debbie DeHart	3-6	0-0	8	4	6	0
F 33	Marybeth Hamm	1-8	0-2	6	0	2	0
	53 Lori Powers	0-1	1-2	2	4	1	0
	34 Caryn Anderson	0-0	0-0	1	0	0	0
	24 Vivian Flora	0-0	0-0	0	0	0	0
	43 Vonda Ramey	0-0	0-0	1	0	0	0
	31 Pam Anderson	0-0	0-1	0	0	0	0
	23 Cindy Lawson	0-2	0-0	0	0	0	0
	32 Susan Barker	0-0	0-0	0	0	0	0
		-	-				
		-	-	1	DB		
TOTALS		17-43	1-6	32	13	35	7

NO.	Pulaski Co.	FG-FGA	FT-FTA	REB	P	TP	A
12	Lori Hines	8-15	3-4	2	3	19	2
11	Brenda Hurst	3-8	3-5	9	1	9	1
32	Debbie Dixon	2-5	2-3	3	1	6	3
25	Pam Phipps	1-3	0-0	6	0	2	1
24	Sheila Sutton	8-11	0-0	6	2	16	1
31	Lori Muncy	0-1	2-2	0	0	2	0
23	Peggy Herring	1-2	1-4	5	2	3	0
30	Kelley Voiers	0-1	0-0	1	0	0	0
15	Kim Garner	0-0	0-0	0	1	0	0
33	Staci Acton	1-1	0-0	1	1	2	0
14	Polly Wilson	0-0	0-0	1	0	0	0
20	Brenda Sutton	DNP	-				
		-	-				
		-	-	2	1B		
TOTALS		24-47	11-18	36	11	59	8

PERCENTS 32.1 16.7 2 TEAM REBOUNDS (NOT IN TOTAL)

PERCENTS 51.1 61.1 1 TEAM REBOUNDS (NOT IN TOTAL)

SCORE BY HALVES 12-8-10-5 = 35
 OFFICIALS Dottie Brothers & L. L. McGinty

Pulaski County
14-14-15-16 = 59